

Edge details for membrane roofs

It is important to get the edge detailing right around the top and side edges of a membrane roof. If you don't have an anti-spill edge, rainwater blown along a roofing membrane and over the edge can stain the wall surface it flows down.

UV exposure to these membranes can cause the surface to oxidise, and when this oxidation is carried down a wall surface by rain it can cause staining.

These have been required by E2/AS1 since 2005, and are recommended by membrane suppliers, but haven't always been designed and installed.

The solution is an anti-spill edge detail (Figure 3).

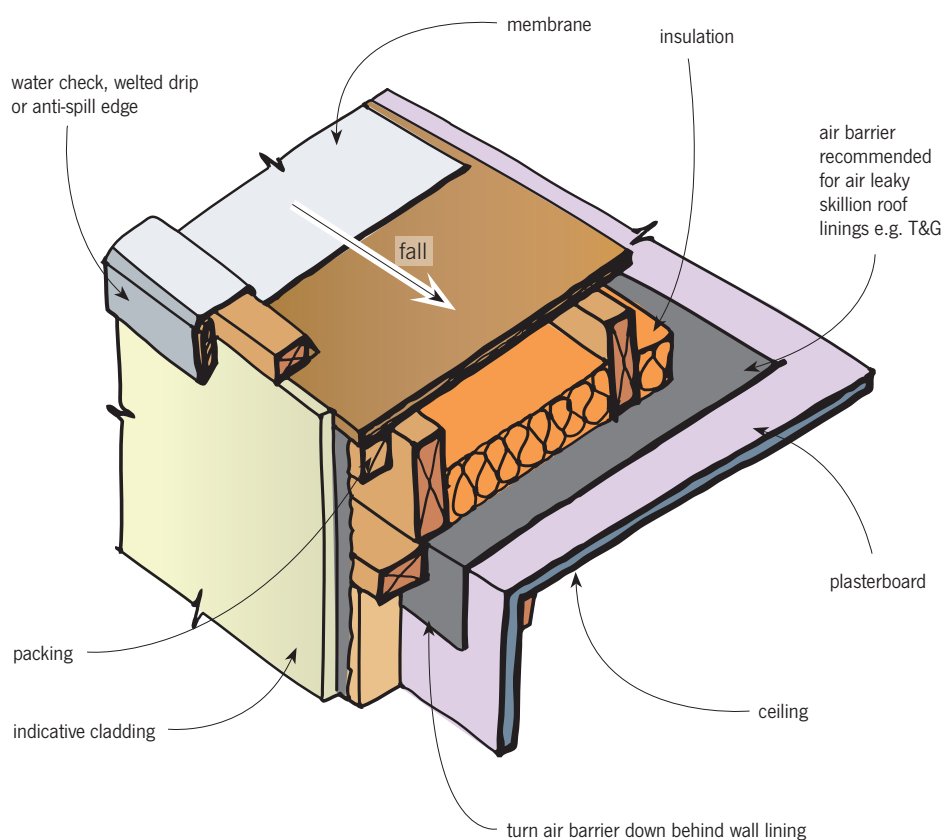


Figure 3: Anti-spill edge or water check to prevent water spillage.